



ENTERPRISE

# SMS ENTERPRISE

WE CREATE YOUR WAY...

**At SMS ENTERPRISE, we provide premier solar consulting services, empowering you to harness the full potential of solar energy.**

**'SMS ENTERPRISE - we create your way' to a brighter, sustainable future.**

**SINCE 2018**





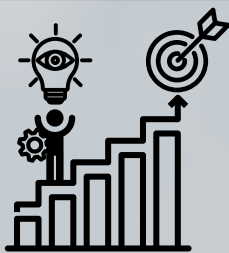
# ABOUT OUR COMPANY

## HOW WE STARTED

**In 2018, SMS ENTERPRISE embarked on a transformative journey into solar consultancy, driven by the pressing need we observed in the market. We recognized that many vendors were struggling due to a lack of comprehensive knowledge and expertise in solar projects. This gap inspired us to step in and offer our specialized consultancy services. Our mission was clear: to provide the guidance and support needed to navigate the complexities of solar energy solutions. By leveraging our in-depth understanding of the industry, we aimed to empower vendors with the insights and strategies necessary to succeed in the rapidly evolving solar landscape. 'SMS ENTERPRISE - we create your way' to informed and effective solar energy solutions.**



# Vision



At SMS ENTERPRISE, our vision for consulting and designing is to lead the solar industry by delivering innovative, efficient, and sustainable energy solutions. We aim to be the trusted partner for our clients, providing expert guidance and cutting-edge designs that maximize the potential of solar energy. Our commitment is to drive the adoption of renewable energy, reduce environmental impact, and contribute to a greener, more sustainable future

# Mission



01

OUR MISSION ALIGNS WITH OUR VISION TO LEAD IN SOLAR CONSULTING AND DESIGNING. FIRSTLY, WE ARE DEDICATED TO DELIVERING INNOVATIVE AND SUSTAINABLE SOLAR ENERGY SOLUTIONS TAILORED TO OUR CLIENTS' UNIQUE NEEDS.

02

WE STRIVE TO BE THE MOST TRUSTED PARTNER BY PROVIDING EXPERT GUIDANCE AND SUPPORT THROUGHOUT EVERY STAGE OF THE SOLAR PROJECT.

03

WE ARE COMMITTED TO DRIVING THE WIDESPREAD ADOPTION OF RENEWABLE ENERGY BY EDUCATING AND EMPOWERING OUR CLIENTS WITH THE KNOWLEDGE AND TOOLS NECESSARY FOR SUCCESS.

04

WE AIM TO SIGNIFICANTLY REDUCE ENVIRONMENTAL IMPACT AND CONTRIBUTE TO A GREENER, MORE SUSTAINABLE FUTURE

# KEY FACTORS



## **01** 3D PRE DESIGNS

3D solar pre-design provides a detailed and realistic visualization of the solar installation, allowing clients to see precisely how the system will look and fit on their property. This clarity helps in making informed decisions and ensures alignment with aesthetic and functional expectations.

## **02** CEIG DRAWINGS

CEIG (Certified Electrical Installation General) drawings ensure that the solar installation adheres to all local and national electrical codes and regulations. This compliance is crucial for obtaining necessary permits and approvals from regulatory authorities.

## **03** DPR

The DPR begins with an executive summary that provides a high-level overview of the project, including its objectives, scope, and significance. This section sets the stage for the detailed information that follows.

## **04** REPORTS

They cover various aspects, including feasibility studies, system design, financial projections, and regulatory compliance. These reports help clients make informed decisions, optimize system performance, and ensure successful implementation of solar solutions. By offering detailed insights and actionable guidance, solar consulting reports play a crucial role in the planning and execution of effective solar energy projects.

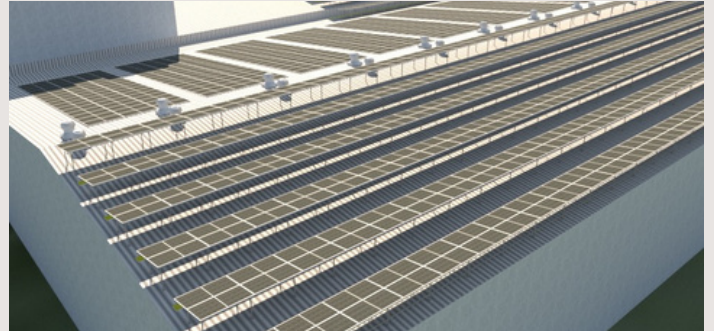
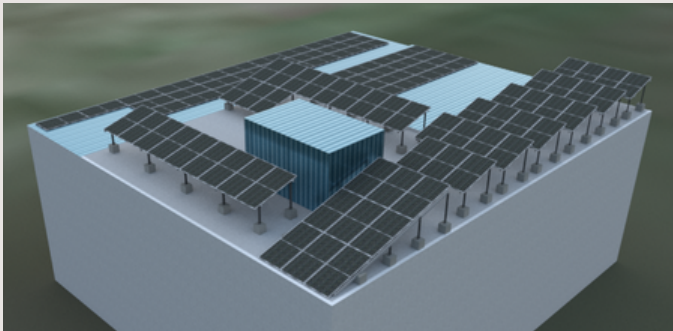
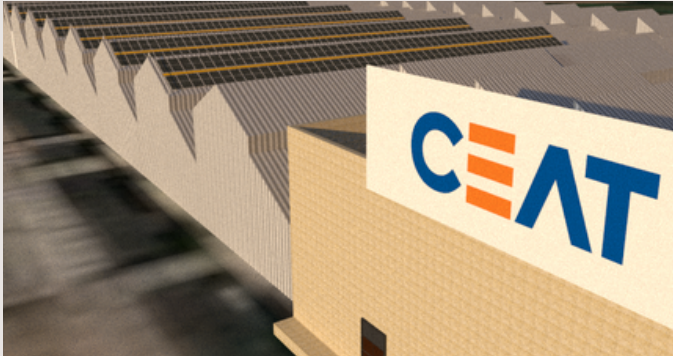


# **3D PRE DESIGNS**

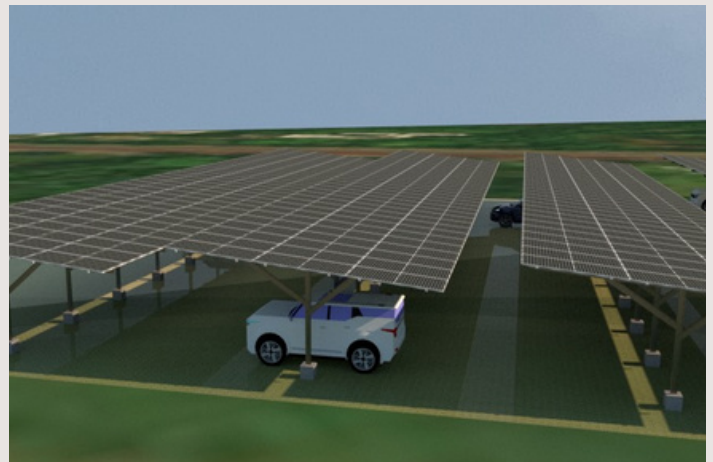
- 3D Accurate and detailed designs.
- 3D Immersive project visualizations.
- 3D design video Clip
- Structure BOM

- **INDUSTRIAL**
- **COMMERCIAL**
- **RESIDENTIAL**
- **CAR PORT**

## **INDUSTRIAL**



## **CAR PORT**

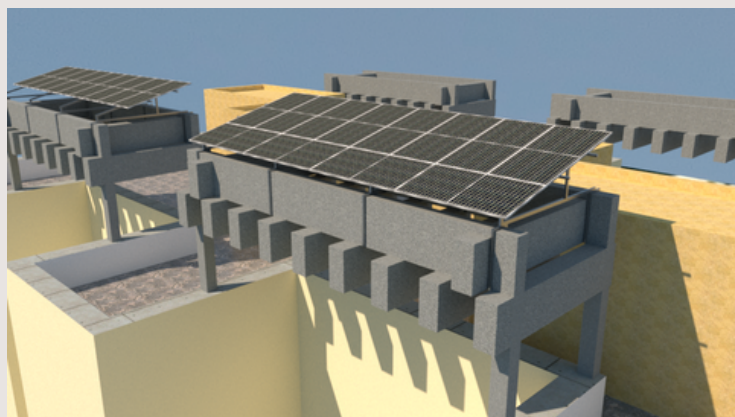
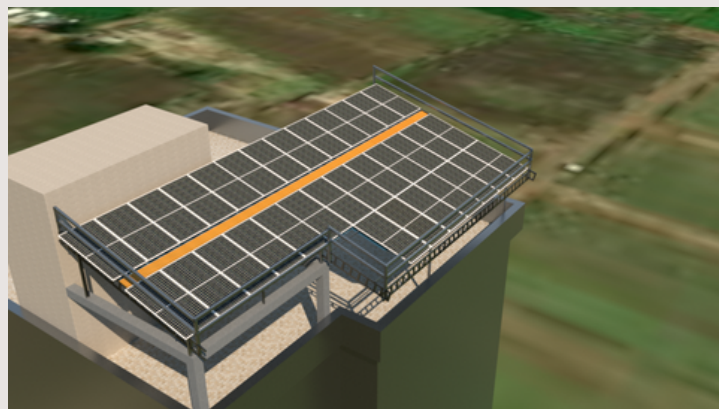
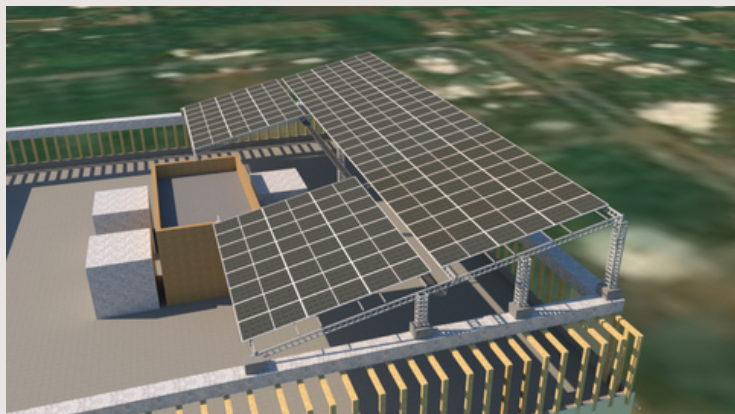






# 3D PRE DESIGNS SAMPLES

## COMMERCIAL



## RESIDENTIAL

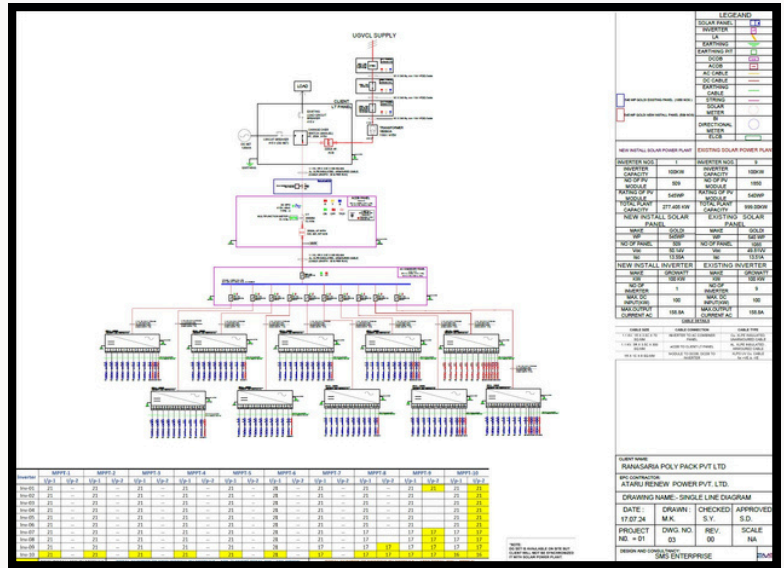




# **CEIG -CERTIFIED ELECTRICAL INSTALLATION GENERAL**

## • **CEIG DRAWINGS**

1. SINGLE LINE DIAGRAM
2. KEY PLAN
3. EARTHING LAYOUT
4. EQUIPMENT LAYOUT
5. IFP PORTAL PROCESS



## **DPR PROJECTS**

1. PV ARRAY LAYOUT
2. DC SINGLE LINE DIAGRAM
3. AC SINGLE LINE DIAGRAM
4. GENERAL ARRANGEMENT LAYOUT
5. EQUIPMENT LAYOUT
6. EARTHING LAYOUT
7. DETAIL OF EQUIPMENT EARTHING
8. TL-CABLE ROUTE LAYOUT
9. HT-CABLE ROUTE LAYOUT
10. CABLE TRENCH LAYOUT (DC & AC)
11. STRUCTURE FABRICATION DRAWING  
(RAFTER, PURLIN, CLIT, BRACING ETC)
12. STRUCTURE BUILD OF MATERIAL



## **REPORTS**

1. PVSYST REPORT
2. STAAD REPORT
3. SHADOW ANALYSIS REPORT
4. BOM & BOQ REPORT
5. GENERATION REPORT



# Thank You

## WE'RE HERE TO HELP

- **700+ MW SOLAR PROJECT DESIGNING EXPERIENCE**
- **250+ EPC COMPANIES**
- **500+ CEIG APPROVALS**



### Address

328, SUN TRADE CENTRE, NEAR DGVCL OFFICE  
RAMNAGAR, RANER, SURAT - 395005



### Telephone

+91 7990854900 / +91 7016759535 / +91 9316776838



### SOCIAL HANDLE



[@sms\\_enterprise7874](mailto:@sms_enterprise7874)

CLICK ON THE HANDLE TO VISIT



[SMS Enterprise](#)



[SMS ENTERPRISE](#)



WE CREATE YOUR WAY...